

# WAYSIDE LUBRICATION SYSTEMS

Smart & Reliable Solutions



Quality Engineered Systems | [www.jsgindustrial.com](http://www.jsgindustrial.com)



## THE EXPERTS IN LUBRICATION SOLUTIONS

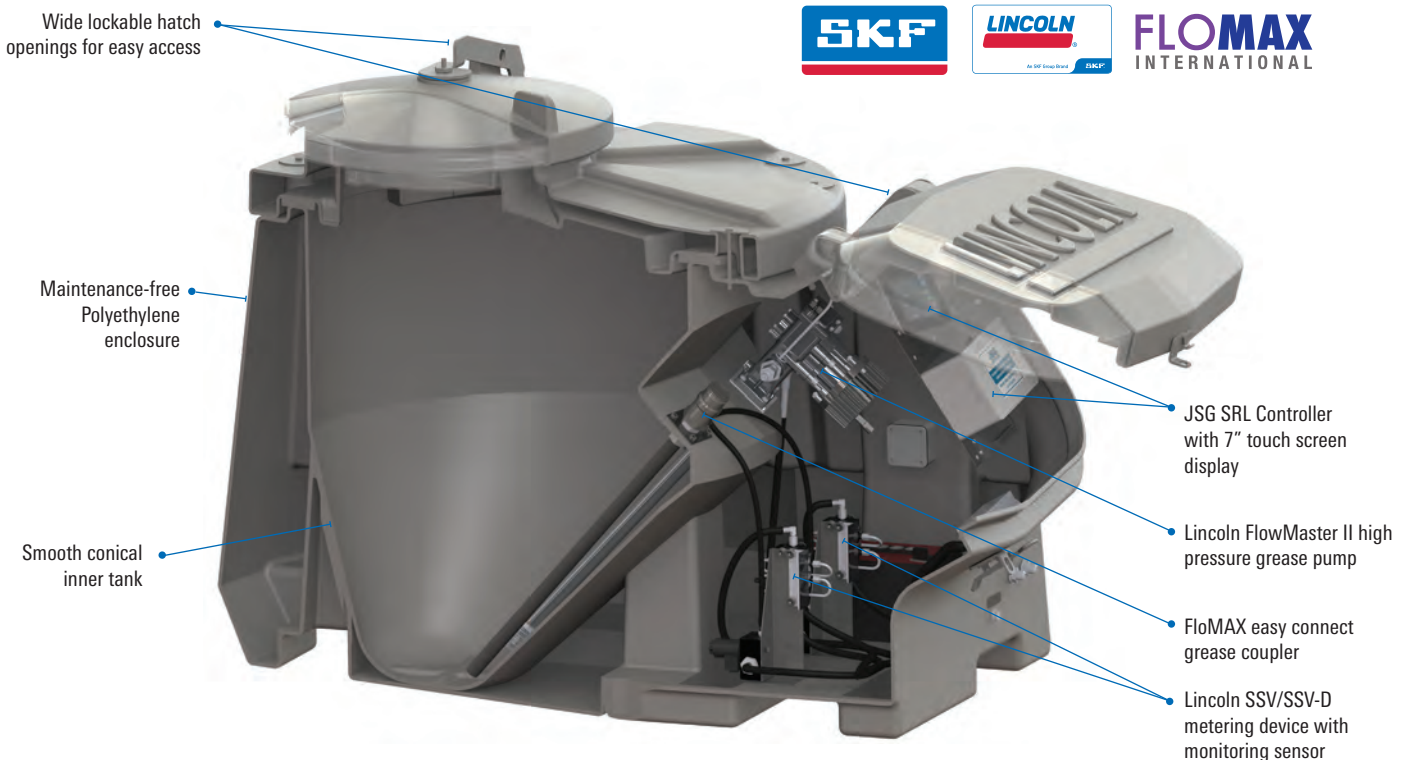
JSG Industrial Systems has partnered with SKF/Lincoln to provide the world's most complete portfolio of lubrication solutions. Drawing on more than 200 years of combined Rail Friction Management experience, we continue to help provide reliable and innovative ways to reduce maintenance costs, improve productivity, enhance safety and optimize manpower resources.

Our quality automatic lubrication systems provide excellent ROI for the Rail Industry by managing friction and saving energy. This helps to reduce noise, and provide significant operational benefits by extending the re-profiling and re-grinding intervals of both the rail & wheels.

### Auto Rail Lubrication - Wayside Pumping Station

JSG Industrial Systems offers pumping stations sized to meet design requirements and service cycle. Systems can be designed and configured to suit location and maintenance conditions. The technology used with each system is consistent and offers:

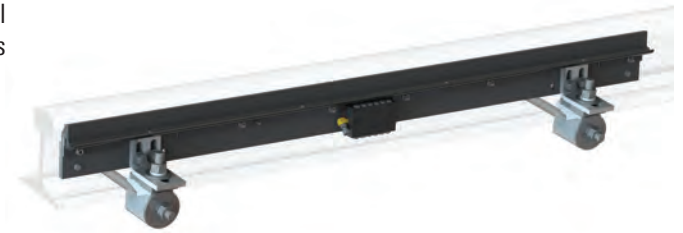
- **HIGH PRESSURE SYSTEM** to run in any condition and keep all ports free of debris reducing field maintenance activities
- **CAPABLE OF PUMPING** long distance allowing site placement of station in serviceable locations
- **POINT-TO-POINT** patented metering devices ensuring precise and controlled delivery of lubricant
- **CONTROL SYSTEM** offering complete remote management capability
- **SOLAR POWER** for remote locations using renewable energy
- **LONG SERVICE LIFE** with minimal maintenance intervals & cost



## Gauge Face Lubrication

Gauge Face Lubrication (GFL) significantly reduces wheel flange and rail wear that occurs at the curve section of track. The GFL applicator bars feature benefits such as:

- Evenly placing grease high on the gauge face to be effectively collected by passing wheels
- Brush holding excess grease to be picked up by next train which minimizes grease waste
- One Gauge Face system can supply several curves in succession
- Universal mounting that is easy to adjust



## Top-Of-Rail Lubrication

Top-Of-Rail (TOR) lubrication provides a solution to greatly reduce noise emissions and wear to the running surface of rail occurring on very tight radius curves. TOR applicator used with our systems offers benefits such as:

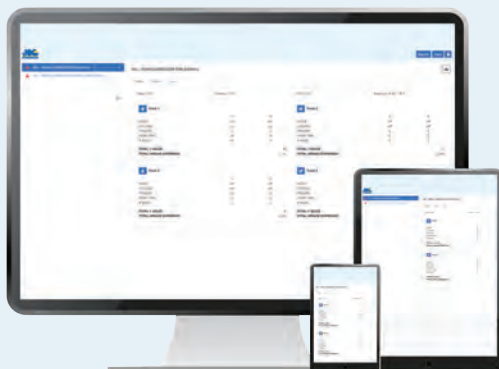
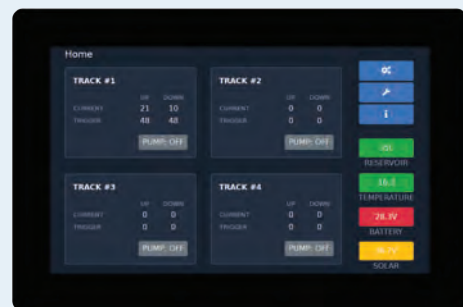
- Consistently applying an even spread of lubrication
- Spring mounted bars to withstand false-flange wheel strikes
- Metal-to-metal seal means no parts needing replacement



## JSG Smart Rail Lube Controller (SRL)

Every new system utilises the JSG SRL controller which has been designed and developed for wayside lubrication by JSG Industrial Systems, offers a more efficient and modernised way of managing rail lubrication system digitally.

- Large display screen with informative system status
- User-friendly GUI with protected access
- Manages lubrication of up to four tracks simultaneously including travel detection
- Telemetry-ready for when opting to use with JSG Telemetry Service for complete remote management



## JSG Telemetry Service

JSG Industrial Systems offers a Telemetry Service via a web accessible portal ensuring complete remote management of every system that is built with the JSG SRL controller.

- Simplified method of monitoring the status of every lubricator on the network
- Access to control settings of lubricators
- Instantaneous alarms via email notifications including the details of the lubricator which requires attention
- Review historical reports and lubricator site location

## **AUSTRALIA**

JSG Industrial Systems  
Unit 1, 202-214 Milperra Road,  
Milperra NSW 2214

[www.jsgindustrial.com](http://www.jsgindustrial.com)

## **INDONESIA**

PT JSG International  
CIBIS Park, Building 408  
Jl. TB Simatupang No. 2  
Cilandak, Jakarta Selatan, 12560

[www.ptjsg.co.id](http://www.ptjsg.co.id)

## **NEW ZEALAND**

JSG Industrial NZ  
Unit 3, 44 Crooks Road  
East Tamaki  
Auckland, 2013

[www.jsgindustrial.co.nz](http://www.jsgindustrial.co.nz)

## **SINGAPORE**

JSG Industrial PTE  
22, Boon Lay Way,  
TradeHub21, #01-59  
Singapore 609968

[www.jsgindustrial.com.sg](http://www.jsgindustrial.com.sg)

## **SOUTH AFRICA**

JSG Industrial South Africa  
86 Mobile Road  
Airport Industria  
Capetown, 7490

[www.jsgindustrial.co.za](http://www.jsgindustrial.co.za)